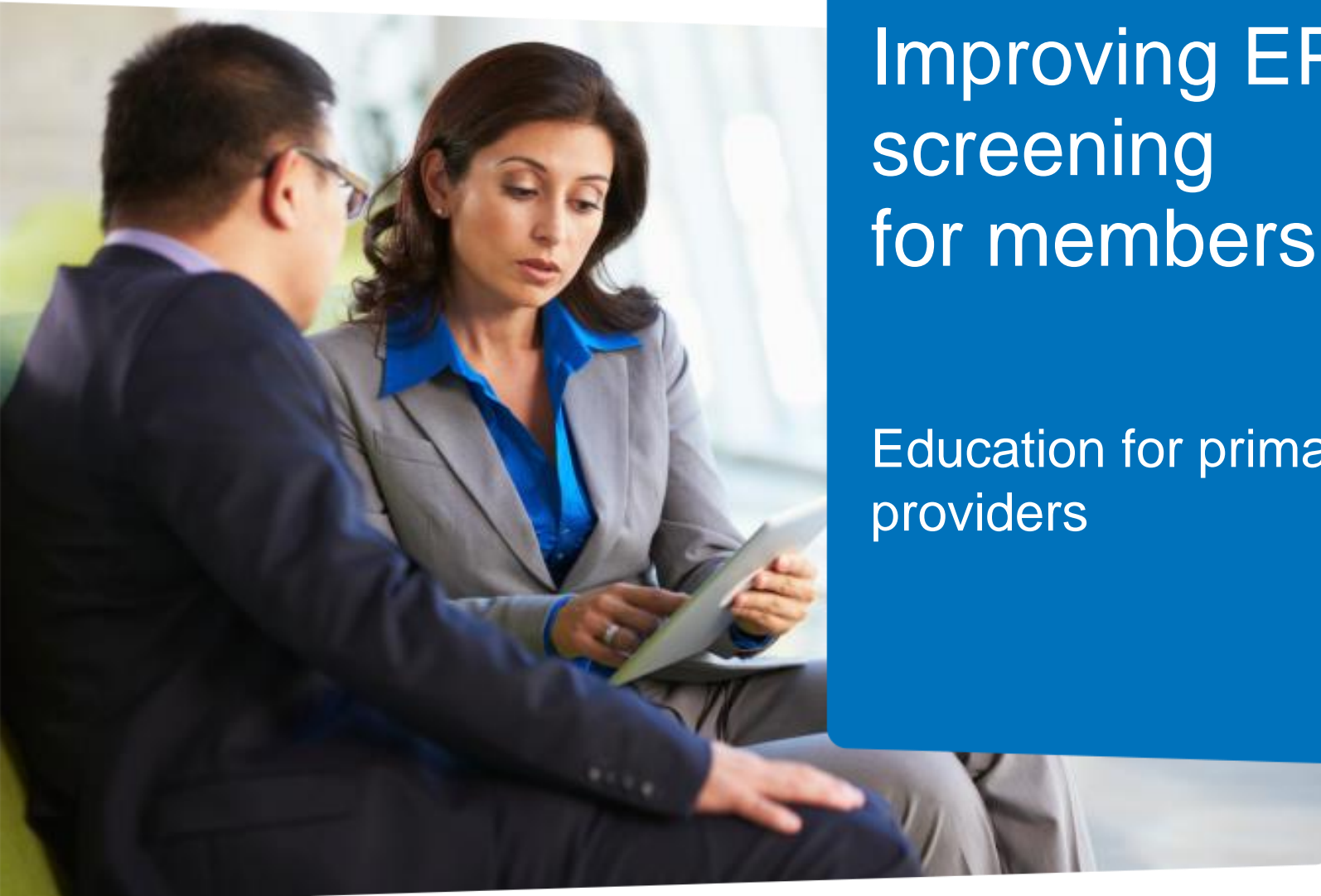




Improving EPSDT screening for members

Education for primary care
providers



What is EPSDT?

- Early and Periodic Screening, Diagnosis and Treatment (EPSDT) is Medicaid's comprehensive and preventive child health program for individuals under the age of 21.
 - Early: Identifying problems early, starting at birth
 - Periodic: Checking children's health at periodic, age-appropriate intervals
 - Screening: Doing physical, mental, developmental, dental, hearing, vision and other screening tests to detect potential problems
 - Diagnosis: Performing diagnostic tests to follow up when a risk is identified
 - Treatment: Treating the problems found
- **Note:** In markets where Anthem Blue Cross and Blue Shield Healthcare Solutions (Anthem) offers CHIP benefits, the age requirement may vary.

What is EPSDT? (cont.)

- Defined by law as part of the *Omnibus Budget Reconciliation Act of 1989* legislation
- Requires states to cover all services within the scope of the federal Medicaid program
- Includes periodic screening, vision, dental and hearing services among its requirements
- Requires (per *Section 1905(r)(5)* of the *Social Security Act*) that any medically necessary health care service listed in *Section 1905(a)* be provided to an EPSDT recipient even if the service is not available under the state's Medicaid plan to the rest of the Medicaid population

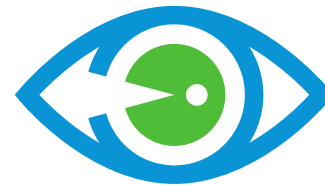
Why is it important?

- Focus attention on early prevention and treatment
- The program consists of two mutually supportive components:
 - Assuring the availability and accessibility of required health care resources
 - Helping Medicaid recipients and their parents or guardians effectively use these resources

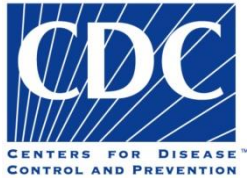


EPSDT benefits

- Screening services
 - Comprehensive health and developmental history
 - Comprehensive unclothed physical exam
- Appropriate immunizations
- Laboratory tests
- Lead toxicity screening
- Health education
- Vision services
- Dental services
- Hearing services
- Other necessary health care



Immunization and periodicity schedules



Anthem recommends following established guidelines:

- Centers for Disease Control and Prevention Advisory Committee on Immunization Practices immunization schedules:

www.cdc.gov/vaccines/acip/index.html



- American Academy of Pediatrics periodicity schedule: brightfutures.aap.org/clinical_practice.html



- American Academy of Pediatric Dentistry: www.aapd.org/media/Policies_Guidelines/G_CariesRiskAssessmentChart.pdf



- American Academy of Family Physicians: www.aafp.org

Treatment and follow-up care

- When a screening service indicates the need for further evaluation and diagnosis, a referral or treatment is required without delay.
- Evaluation, diagnosis and/or treatment may be provided at the time of the screening visit if the health care professional is qualified to provide the services.



Treatment and follow-up care (cont.)

- Follow-up care can be provided by:
 - Primary care providers (for example, family physicians or pediatricians).
 - Specialists (for example, neurologists, ophthalmologists and audiologists).
 - Other health professionals (for example, dentists, advanced practice nurses, psychologists and nutritionists).
 - Community agencies.

How to report EPSDT services

- Providers must bill Anthem using correct coding guidelines to ensure accurate reporting for EPSDT services.
- Some states require providers to submit information directly to the state's immunization registries.
- Enroll in your state's Vaccines for Children program.
- Anthem regularly exchanges data with state immunization registries and lead registries where applicable.



Anthem outreach program

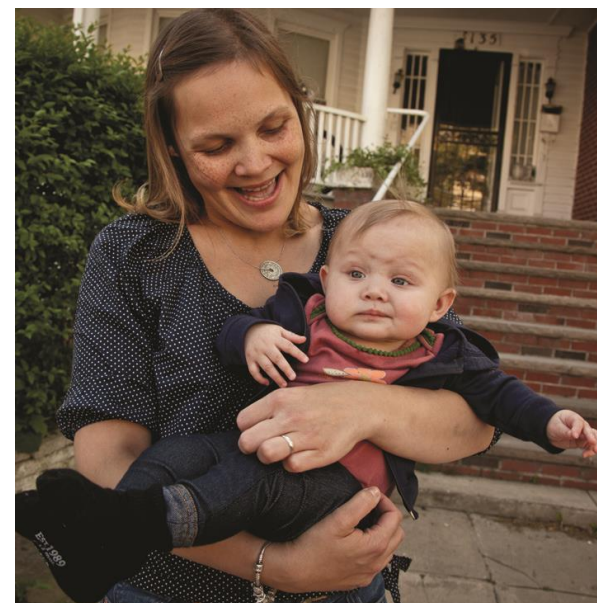
- Preventive health services reminder (annual birthday reminder)
- EPSDT overdue service reminder postcard
- Provider letters/overdue EPSDT service listing for members

Resources for providers

- Provider manual/handbook
- EPSDT provider toolkit
 - Not available in all markets
 - Distributed to primary care providers and posted on our provider website
 - Includes:
 - Guide to services and billing
 - Assessment summary
 - Preventive care resources

Next steps

- Review your provider manual/handbook and EPSDT provider toolkit, if available.
- Call Provider Services at **1-844-396-2330** or your local Provider Relations representative if you have questions.
- Complete and submit the *Training Verification Form*.



Thank you

<https://mediproviders.anthem.com/nv>

Anthem Blue Cross and Blue Shield Healthcare Solutions is the trade name of Community Care Health Plan of Nevada, Inc., an independent licensee of the Blue Cross and Blue Shield Association. ANTHEM is a registered trademark of Anthem Insurance Companies, Inc.

ANVPEC-0486-17 January 2018

