



Look what is new in Provider Pathways

Anthem Blue Cross and Blue Shield (Anthem) is pleased to announce two new modules that have been added to our self-paced eLearning called Provider Pathways. Provider Pathways is a 24/7 digital resource that gives a foundation for doing business with Anthem. Provider Pathway not only provides what you need to know about the key tools and resources for doing business with us, but we have now added these new modules:

- **CAHPS®** – Find out what the Consumer Assessment of Healthcare Providers and Systems survey is and how it impacts you.
- **SBIRT** – Learn more about this important screening, brief intervention, and referral to treatment (SBIRT) method. Let us show you how a simple evidence-based process can be utilized with all types of patients in various settings to identify those needing additional substance use support.

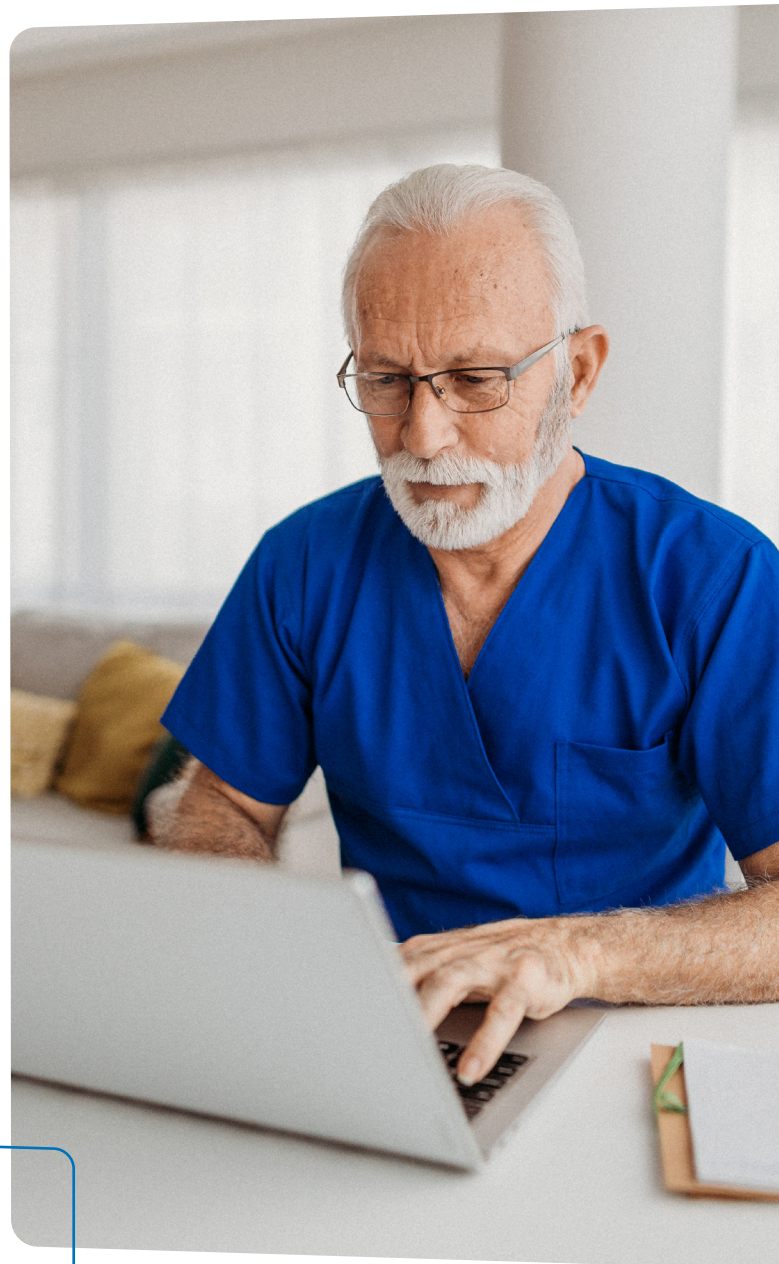
CAHPS® is a registered trademark of the Agency for Healthcare Research and Quality (AHRQ).

How to Find Provider Pathways

Provider Pathways — Doing Business with Anthem eLearning gives you the flexibility for scheduling training for yourself and your staff. You can find this training on the Anthem provider website:

- Go to <https://providers.anthem.com/in>.
- Under *Resources* in the top navigation menu, select **Training Academy**.
- Once on the page, select **Training Resources**. Provider Pathways will be at the top of the Training Resources page.

You will find the new modules in the table of contents shortly after starting the training.



If you have questions about this new provider resource, please reach out to your Provider Relationship Management representative.

<https://providers.anthem.com/in>

Anthem Blue Cross and Blue Shield is the trade name of Anthem Insurance Companies, Inc., independent licensee of the Blue Cross and Blue Shield Association. Anthem is a registered trademark of Anthem Insurance Companies, Inc. Providers who are contracted with Anthem Blue Cross and Blue Shield to serve Hoosier Healthwise, Healthy Indiana Plan and Hoosier Care Connect through an accountable care organization (ACO), participating medical group (PMG) or Independent Physician Association (IPA) are to follow guidelines and practices of the group. This includes but is not limited to authorization, covered benefits and services, and claims submittal. If you have questions, please contact your group administrator or your Anthem network representative.

INBCBS-CD-012374-22-CPN12368